



# PEOPLE'S THEATRE

Spring/Summer Season 2019

# Booking information

## Box Office opening hours (daytime)

10.30am – 1.00pm Monday to Friday.

## Box Office opening hours (evening)

### Non-performance weeks

7.30pm – 8.30pm Monday, Wednesday and Friday for advance bookings.

### Performance nights

From one hour prior to curtain-up for bookings in person (subject to availability).

**Please note: Box Office days and hours are subject to change and may vary at short notice. We recommend telephoning in advance before making a trip in person.**

The Box Office is closed all day on Bank Holidays and will be closed in the evenings from Monday 22nd July until early September.

## Thank you

£1 from every ticket goes towards our Redevelopment Fund, our most significant project in 50 years.

Thank you for your support, it is very much appreciated!

If you would like to make a further donation please go to [www.peoplesfund.org.uk](http://www.peoplesfund.org.uk)

## Telephone

0191 265 5020  
(Option 2 for Box Office)

## Email enquiries

[boxoffice@peopletheatre.co.uk](mailto:boxoffice@peopletheatre.co.uk)

## Online booking

[www.peopletheatre.co.uk](http://www.peopletheatre.co.uk)

No booking fees apply. You can select your own seats, pay securely and select to have the tickets posted, emailed or held for collection.

All online bookings are non-refundable. However, tickets for PTAG productions can be exchanged for an alternative night, or a credit note given for a future PTAG show.

## Post

Postage costs £1.00

Alternatively tickets can be held at the Box Office for collection in advance or on the night of the performance.

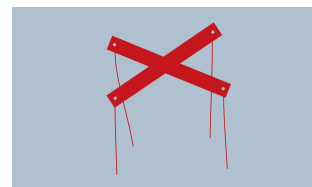
## Prices

Full price £14.00  
Concession £11.50

## Young People's Theatre

Full price £10.00  
Concession £7.00

# What's on



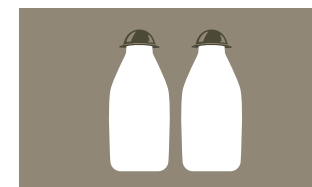
**Start Swimming**  
22nd–23rd February (p4)



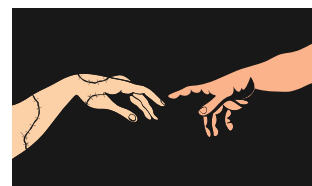
**Arcadia**  
12th–16th March (p6)



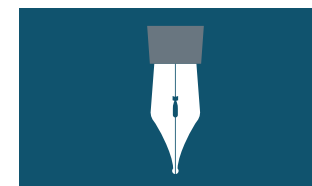
**The Importance of Being Earnest**  
2nd–6th April (p8)



**Voltemand and Cornelius are Joyfully Returned**  
7th–11th May (p10)



**Frankenstein**  
21st–25th May (p12)



**The Dark Earth & The Light Sky**  
11th–15th June (p14)



**The Gambling Man**  
16th–20th July (p16)

Booking is now open for our 2019 panto – **Dick Whittington**. See the website or give the Box Office a ring for details.

## Visiting shows

We have some very exciting shows coming up soon from visiting theatre companies.

These include the following:

---

**Michaela Percival School of Dancing**  
2nd March

---

**Simply Dance Academy**  
13th & 14th April

---

**Newcastle Gang Show**  
17th–20th April

---

**Shelley Dobson School of Dance**  
1st June

---

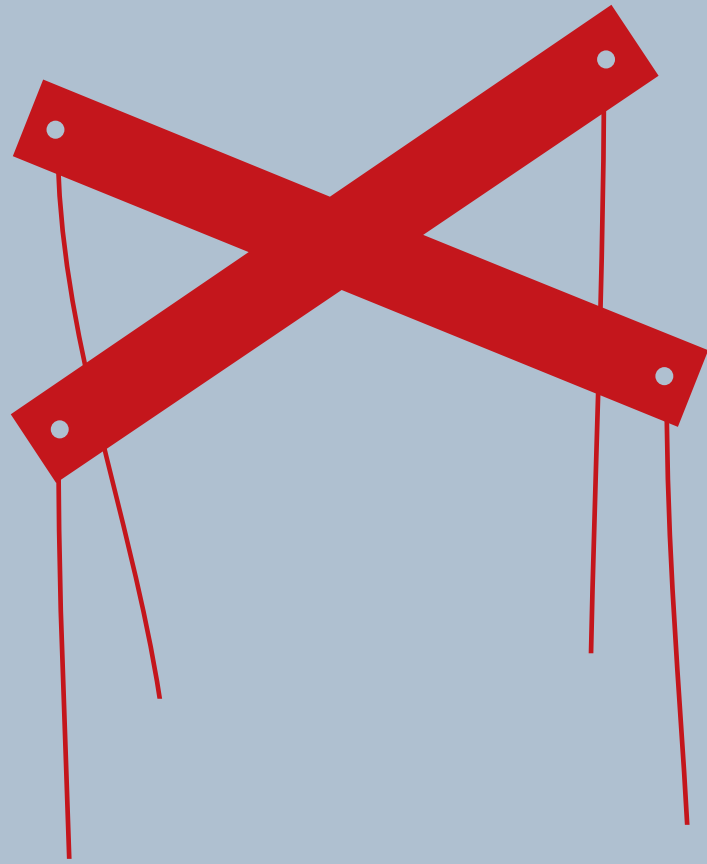
**SA Productions**  
29th & 30th May, 30th June and 6th & 7th July

---

**Katherine Brett**  
26th, 27th & 28th July

---

Visit the website for more details of visiting company performances.



# Start Swimming

by James Fritz  
a Young People's Theatre production

This amateur production of Start Swimming is presented in association with Nick Hern Books Ltd and is performed in our new Studio Theatre

# I'm not going anywhere...

**22nd – 23rd  
February 2019**

**7.30pm** (Fri 22nd)  
**2.30pm & 7.30pm** (Sat 23rd)  
Tickets **£10.00**  
Concession **£7.00**

James Fritz's Start Swimming asks what power young people have to affect change and resist authority. It was developed by the Young Vic in early 2017 before successfully transferring to the Edinburgh Fringe.

Fritz's drama sees the cast navigate a dystopian reality TV show in which they question each other and are rewarded for assuming voices of authority or conformity and punished for resistance. Striking a complicated balance between optimism and cynicism, the show ultimately makes a galvanising case for solidarity in the face of a prevailing system which promises little to the young people of today.



# Arcadia

by Tom Stoppard

This amateur production of Arcadia is presented by special arrangement with SAMUEL FRENCH, LTD

**It's the best possible time to be alive, when almost everything you thought you knew is wrong**

**12th –16th  
March 2019**

Starts **7.30pm**  
Tickets **£14.00**  
Concession **£11.50**

Past and present are comically blurred in an English country house as the life of the Croom family in 1809 is juxtaposed with two present-day researchers working in the library of Sidley Park. The pert observations of Thomasina, a teenage Regency maths prodigy, are pitched against the subdued passion of the 21st century academics. Meanwhile, death lurks outside amidst the shrubberies beyond the French window.

Stoppard's absorbing play explores the nature of truth and time, the difference between the Classical and the Romantic temperament and the disruptive influence of sex on our orbits in life – a force which neither Newton nor Einstein could explain. A smash hit since its debut at the National Theatre in 1993, Arcadia is frequently cited as one of the great plays of the 20th century.



# The Importance of Being Earnest

by Oscar Wilde

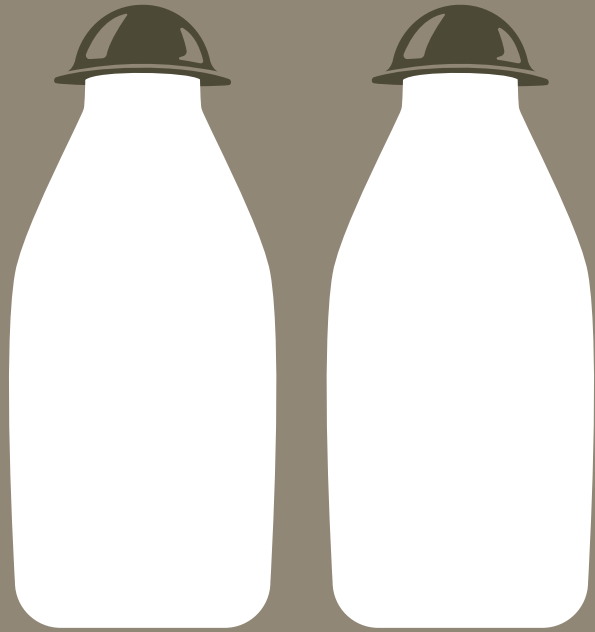
## To be natural is such a very difficult pose to keep up

**2nd – 6th  
April 2019**

Starts **7.30pm**  
Tickets **£14.00**  
Concession **£11.50**

Who is the central figure in Wilde's immortal comedy? Mr Worthing, who leads a double life as Ernest in town and Jack in the country? Or that she-dragon of London society, Lady Bracknell? The swift, sardonic repartee of this Victorian masterpiece ripples to us across the ages in an endlessly funny exploration of courtship, hidden identities and social posturing among deliciously superficial people.

That Wilde's most famous and crowd-pleasing work has stood the test of time is due not only to its finely tuned understanding of manners, morals, and marriage; the tongue-in-cheek social anarchy that seethes between those polished witticisms rings as true today as it did in the 1890s.



# Voltemand and Cornelius are Joyfully Returned

by Paul Vates

This play is performed in our new Studio Theatre

# If this is normality, then we are insane for accepting it

**7th – 11th  
May 2019**

Starts **7.30pm**  
Tickets **£14.00**  
Concession **£11.50**

The People's Play Award, our new writing competition to find exciting Northern plays and playwrights, is back.

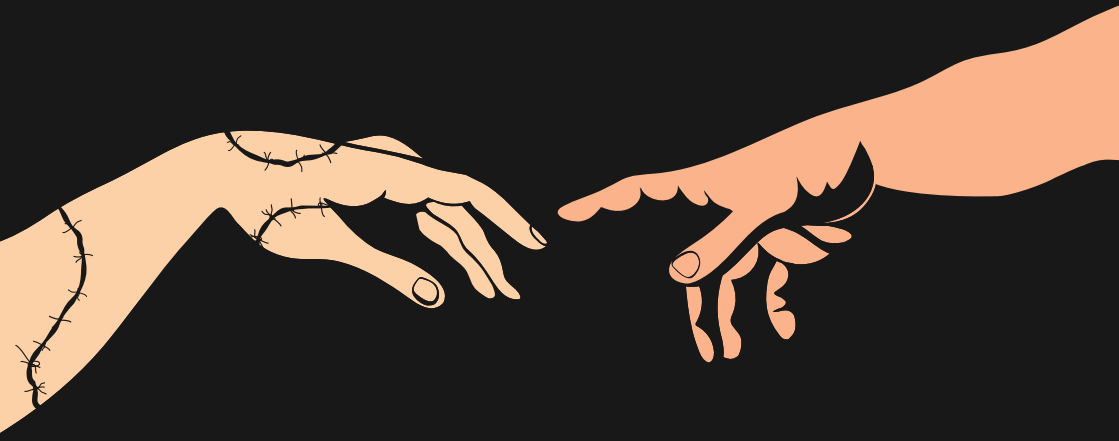
Chosen from nearly 100 entries, this year's winner is Voltemand and Cornelius are Joyfully Returned by Leeds-born actor and writer Paul Vates. The two central characters are minor characters from Hamlet – or are they? And where are they?

Award judge Tony says "this beautiful play will make you laugh, but it's also about the nature of reality, the chaos of war, and the impact of conflict on people's perception of themselves."

We look forward to welcoming you to the world premiere of this fast, funny, absurd and ultimately very moving new play.

Book tickets [www.peopletheatre.co.uk](http://www.peopletheatre.co.uk) or 0191 265 5020

**He lives for my  
destruction. I live  
to lead him on.**



# Frankenstein

by Nick Dear

based on the novel by Mary Shelley

This amateur production of Frankenstein is presented  
by special arrangement with Rosica Colin Ltd

**21st – 25th  
May 2019**

Starts **7.30pm**  
Tickets **£14.00**  
Concession **£11.50**

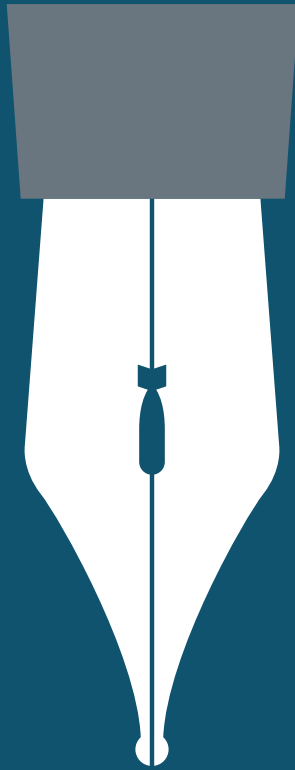
Forget Boris Karloff with a bolt through his neck! Nick Dear's adaptation of Mary Shelley's mythic fable is a humane, intelligent retelling of the original 1818 novel in which much of the focus is on the plight of the obsessive scientist's sad creation, who becomes both his alter ego and his nemesis.

Described as being like *The Tempest* rewritten from Caliban's point of view, Dear's adaptation took the National Theatre by storm when it was unleashed in 2011. A Gothic classic it may be, but there will be as much pity as horror on stage in our North East premiere of this production.

Book tickets [www.peopletheatre.co.uk](http://www.peopletheatre.co.uk) or 0191 265 5020

13

# There's plenty of saints – there ain't so many poets!



## The Dark Earth & The Light Sky

by Nick Dear

This amateur production of The Dark Earth & The Light Sky is presented by special arrangement with Rosica Colin Ltd and is performed in our new Studio Theatre

**11th – 15th  
June 2019**

Starts **7.30pm**  
Tickets **£14.00**  
Concession **£11.50**

Deep in the Hampshire countryside of 1913, Edward Thomas: disaffected husband, exhausted father and tormented writer, scrapes a living. But when he meets American poet Robert Frost, everything changes. Emerging from his cocoon of self-doubt, Edward develops into one of the most influential poets of his time. But as the Great War looms, he makes the drastic decision to enlist, confounding his friends and family.

This probing and intelligent drama premiered in 2012 at the Almeida Theatre, London and is now presented by us as a north east premiere. Beneath the shifting colours of an English sky we explore the quietly enigmatic and fraudtly sensual life of this complex character in an era of change and destruction.

Book tickets [www.peopletheatre.co.uk](http://www.peopletheatre.co.uk) or 0191 265 5020

15





# The Gambling Man

by Ken Hill

adapted from the novel by Catherine Cookson

This amateur production of The Gambling Man is performed by special arrangement with Sheila Land Associates and the Catherine Cookson Charitable Trust

# It's not the cards you're dealt – it's how you play the game...

**16th – 20th  
July 2019**

Starts **7.30pm**  
Tickets **£14.00**  
Concession **£11.50**

From the day he was born, life has been a game of chance for Rory Connor. An ambitious working class lad, he fears nothing and nobody, playing the odds to claw his way up from the mean streets of Victorian Tyneside. Until one day his luck changes and suddenly things do not go as smoothly as he's been used to...

The dramatic stakes are high in this stage adaptation of one of Catherine Cookson's best-loved and biggest-selling novels. This is a rare theatrical outing for this popular regional classic, so book your tickets early.

Book tickets [www.peopletheatre.co.uk](http://www.peopletheatre.co.uk) or **0191 265 5020**

17

# What's on in the Gallery

## Gallery opening times

Our exhibitions can be viewed 10.30am – 1.00pm, Monday to Friday.  
(For daytime openings please check first with Venue Manager on **0191 275 9875**)

Non performance nights Monday, Wednesday and Friday, 7.30 – 8.30pm.

Performance nights from 6.30pm.

For information about small group visits and for viewings outside of these hours please contact the Gallery Manager: **gallery@peoplestheatre.co.uk**



### **Ben Crozier: A Collection Of Curiosities**

Preview: Monday 11th March 2019, 6.30 – 8.30pm

Exhibition: 12th March – 8th April 2019

Ben has created an exhibition of highly detailed and artistic Diorama covering a range of subject matter; three dimensional scenic representations in miniature.



### **Knightsbridge Art Club: Summer Exhibition**

Preview: Monday 6th May 2019, 6.30 – 8.30pm

Exhibition: 7th May – 21st June 2019

A collection of artwork ranging from delicate watercolours to vibrant acrylics, from traditional and detailed observations to unusual abstracts. An eclectic exhibition depicting landscapes, cityscapes, seascapes and the human form.



### **Kathleen Gracen: The Landscape of Norway**

Preview: Monday 24th June 2019, 6.30 – 8.30pm

Exhibition: 25th June – 28th July 2019

Kathleen has found the dramatic scenery of Norway a deeply emotional experience. Her exhibition seeks to create in oils, her feelings when sailing through the fjords.



## Venue Hire

Are you looking for a meeting room, rehearsal room, event space or a 500-seat theatre to host your annual conference? Maybe you need a theatre to stage your own shows? We hire out our spaces at very reasonable rates.

Contact our venue manager at [venuemanager@peoplestheatre.co.uk](mailto:venuemanager@peoplestheatre.co.uk)



## Prop Hire

Maybe you need a skull, a throne or an old telephone as part of a costume hire, or you're producing a play and need a one stop shop for props – we'll probably have it on our shelves.

Contact our props department at [props@peoplestheatre.co.uk](mailto:props@peoplestheatre.co.uk)



## Costume Hire

If you are going to a fancy dress party, themed event or you need to costume your cast for a play, then speak to our wardrobe team. The wardrobe department is open to the public on Monday evenings between 7.30pm and 9.00pm.

Contact our wardrobe department at [wardrobe@peoplestheatre.co.uk](mailto:wardrobe@peoplestheatre.co.uk)





## Making theatre happen

There's a lot that goes on behind the scenes of any People's Theatre production. Designing the set, getting it built, painting it, furnishing it and dressing it. Then, it has to be lit. But that's not all – the actors all use props, need costumes and often makeup and wigs for their characters. Then there's the sound – whether that's sound effects or music to underscore the show. Once all that is done, we're ready to go but it doesn't stop there. The show needs a stage manager, assistant stage managers and crew from all departments to make sure it runs smoothly and is technically perfect. And all done by our amazing volunteer members.



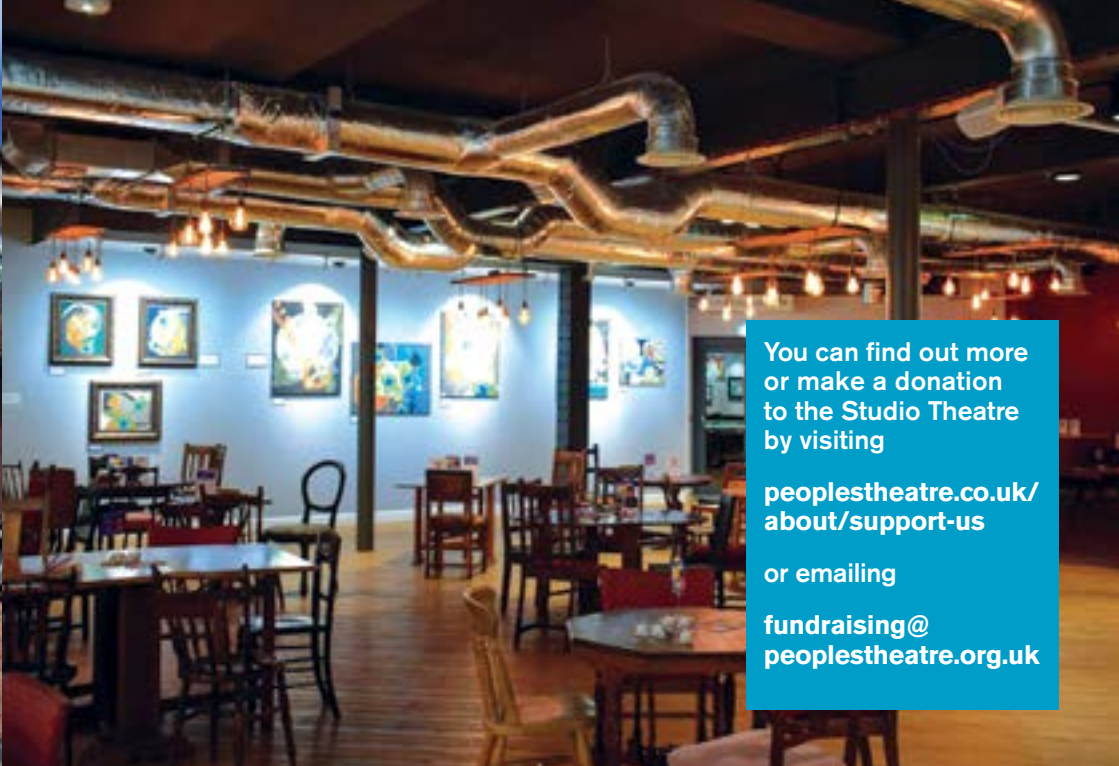
There's a lot to do and teamwork is paramount. We're always happy to welcome new members who want to get involved in the technical and backstage elements of a production. We have our own workshop, scene dock, wardrobe department, lighting and sound equipment and props storage. We have a wealth of knowledge and experience which we are more than happy to pass on. Our Technical Forum runs training sessions for anyone who wants to have a go but doesn't have the experience.

If you're interested in getting involved, being creative and having fun (oh and working hard) check our website for our new members evenings.

### Get involved

**Set design/build**  
**Sound design**  
**Lighting design**  
**Stage management**  
**Crew**  
**Props**  
**Wardrobe**





You can find out more or make a donation to the Studio Theatre by visiting [peoplestheatre.co.uk/about/support-us](http://peoplestheatre.co.uk/about/support-us) or emailing [fundraising@peoplestheatre.org.uk](mailto:fundraising@peoplestheatre.org.uk)

## The work continues

Over the last four years we have raised £1.6 million to complete the biggest update to our building since moving here in 1963. The results of this effort can now be enjoyed by all our visitors.

- **A truly inspiring, new Studio Theatre space on ground floor level**
- **Full access to all areas of the venue for wheelchair and mobility restricted users**
- **New lighting and heating systems that will reduce our carbon footprint**
- **An improved exterior and a new foyer, bar, gallery and archive display area**

Many local and national trusts and foundations have given significant amounts towards this huge change for the theatre. Our audience, members and friends have also given most generously. Without them this could not have happened.

We continue to fundraise for exciting and necessary projects. During 2019 we would like to:

- **Enhance the new Studio theatre to an even higher standard**
- **Upgrade our ladies toilets to do away with queues at busy times**
- **Install a new phoenix artwork, a striking addition to the front of the theatre**

You can help us complete these improvements in a number of ways (not least by coming to productions!). See our website for more details.

### The trusts and foundations who have given their support to this venture are:

- |  |  |
|--|--|
| Arts Council England                     | R.W. Mann Trust                        |
| Benfield Charitable Trust                | Sir James Knott Trust                  |
| Boshier-Hinton Foundation                | Sylvia Waddilove Foundation UK         |
| Bruce Wake Charitable Trust              | The Astor Foundation                   |
| Catherine Cookson Charitable Trust       | The Barbour Foundation                 |
| Esmee Fairbairn Foundation               | The Joicey Trust                       |
| Foyle Foundation                         | The Percy Hedley 1990 Charitable Trust |
| Garfield Weston Foundation               | The Rank Foundation                    |
| Homes & Communities Agency               | The Ridley Family Charity              |
| Hoult Family Grassroots Fund             | The Rothley Trust                      |
| Newcastle Children's Mission & Institute | The Theatres Trust                     |
| Pen & Palette Club Fund                  | The Woodward Charitable Trust          |
| Reece Foundation                         | Trusthouse Charitable Foundation       |
| RFF Gibson Trust                         |  |

## Get involved

### Joining the People's Theatre

The People's Theatre is always delighted to welcome new members. New members' nights are held monthly in the theatre Greenroom at 7.30pm. For dates, please visit [www.peopletheatre.co.uk/get-involved](http://www.peopletheatre.co.uk/get-involved) or telephone 0191 265 5020.

Just come along and enjoy a tour of the backstage areas, wardrobe and rehearsals. Then have a chat with some current members over a drink in the bar and get the membership details and costs. If you think it's for you, the £5 registration gives you three months provisional membership. Our members have a wide variety of skills and are always willing to share their knowledge of the theatre with new members.

### Young People's Theatre

The Young People's Theatre is Newcastle upon Tyne's oldest established youth theatre for 11-17 year olds.

Members meet every Thursday from 6.00pm – 8.00pm to improvise, rehearse, play theatre games and discover more about all aspects of theatre. Membership is between £18-£30 per year, with no auditions required. For all enquiries and to apply, visit [www.ypt.org.uk](http://www.ypt.org.uk) or email [youththeatre@peopletheatre.co.uk](mailto:youththeatre@peopletheatre.co.uk)

## Book your tickets

### Concessions

The concession price applies to those who are aged 18 and under, 60 and over, unwaged or students.

We also offer one free ticket to the assistant of a disabled person who is not able to attend the theatre unaccompanied.

### Season Pass offer

**SAVE MONEY!** Book for all four Main Stage productions in the Season and receive one of them free. The plays included in the offer are Arcadia, The Importance of Being Earnest, Frankenstein and The Gambling Man.

Prices: £42.00 full price / £34.50 concession.

Please give the Box Office a call to get set up.

A Season Pass must be bought by Saturday 16th March 2019.

### Reserved tickets

Reserved tickets must be paid for within 7 working days.

If there are not 7 working days between the date of booking and the performance, tickets must be paid at least 30 minutes before the show starts.

Tickets not paid for by this time are eligible for resale.

### Please note

All concessions, discounts and exchange information listed here refers to People's Theatre productions only. Terms and conditions for visiting companies may differ.

### Group bookings

Book for a party of 10+ for the same date and receive 10% discount. Please note, any discounts must be applied at the time of sale and cannot be given retrospectively.

### Ticket exchange

All tickets are non-refundable.

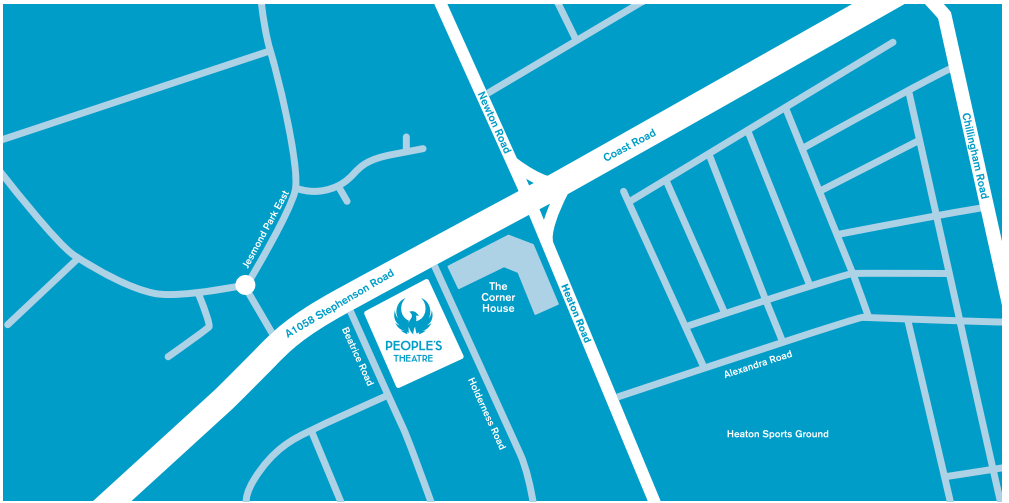
However, tickets for PTAG productions can be exchanged for an alternative night subject to availability, or a credit note given for a future PTAG show.

### Latecomers

Please note, latecomers may not be admitted until a suitable break in the performance or until the interval. If customers arrive after the interval or there is no interval, latecomers will not be admitted.

### Collecting pre-paid tickets

Tickets already paid for can be collected in advance during Box Office opening hours or on the door in person from an hour before the performance starts. Please call ahead if you plan to collect tickets during the daytime opening hours.



## Find us

The People's Theatre  
Stephenson Road  
Newcastle upon Tyne  
NE6 5QF

## Loop system

The Main Auditorium has a loop system installed. Hearing aid users can amplify the sound from the stage by switching their aid to the 'T' setting.

## Parking

There is limited parking at the Theatre. Should it be necessary to park elsewhere, patrons are asked not to park on Holderness Road or Beatrice Road. The Corner House car park is for Corner House patrons only. Please note, fines are now being enforced for misuse. Please park responsibly and with consideration for local residents.

## Access

Our foyer, Main Theatre and new Studio Theatre are fully wheelchair accessible. Please contact the Box Office regarding wheelchair spaces and accompanying carer seats as these cannot be booked online.

## Email newsletter

Customers can sign up to the new emailing list via the website [www.peoples theatre.co.uk](http://www.peoples theatre.co.uk). Subscribers receive monthly updates on what's coming up direct to their inbox.

## Follow us

-  Peoples Ptag
-  @peoples theatre
-  @peoples theatre

